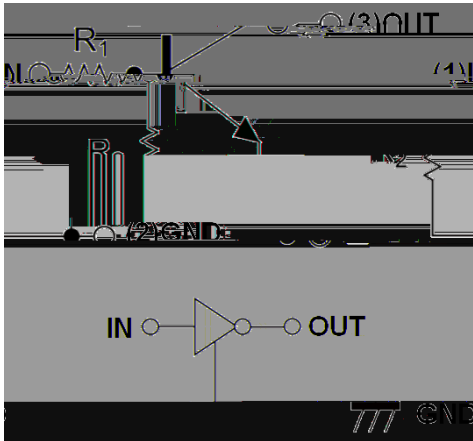




Moisture Sensitivity Level 1  
Surface mount package ideally Suited for Automatic  
Insertion  
Halogen-free

: SOT-523  
: Tin plated leads, solderable per  
J-STD-002 and JESD22-B102  
62



(Ta=25 Unless otherwise specified)

Parameter	Symbol	Unit	Value
Supply Voltage	$V_{CC}$	V	50
Input Voltage	$V_{IN}$	V	-5 to +12
Output Current	$I_o$	mA	100
Power Dissipation	$P_D$	mW	150
Junction Temperature	$T_J$		150
Storage Temperature	$T_{STG}$		-55 to +150



(Ta=25 unless otherwise specified)

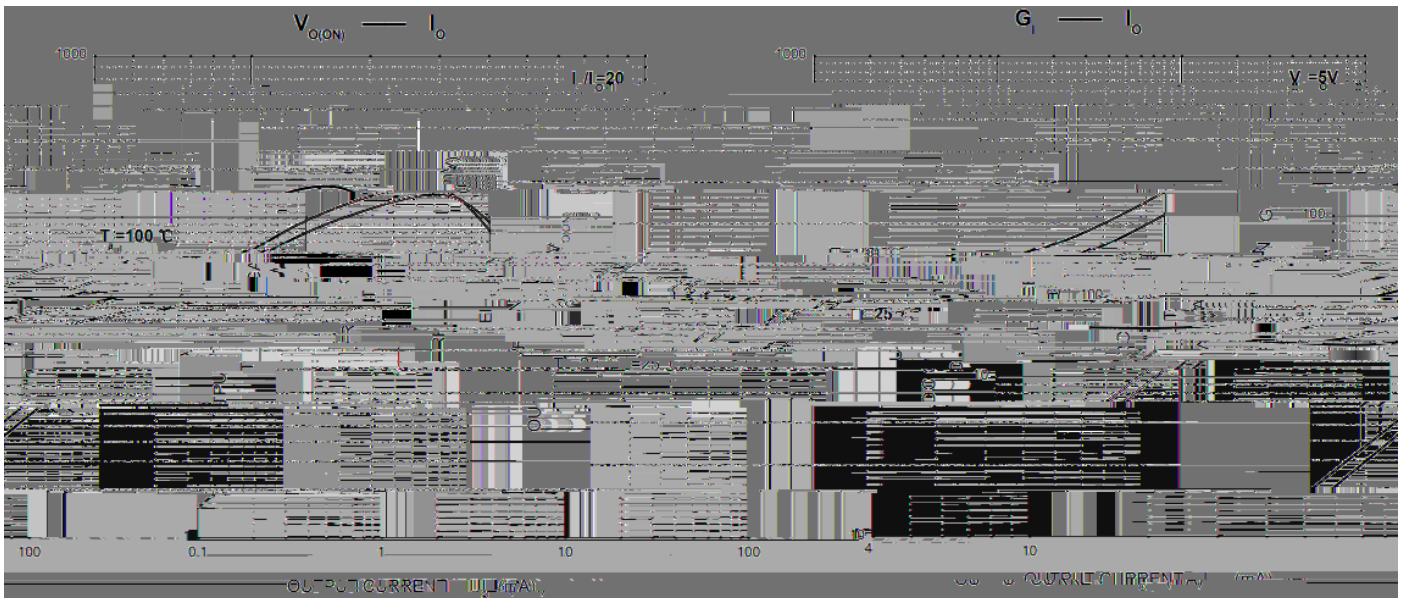
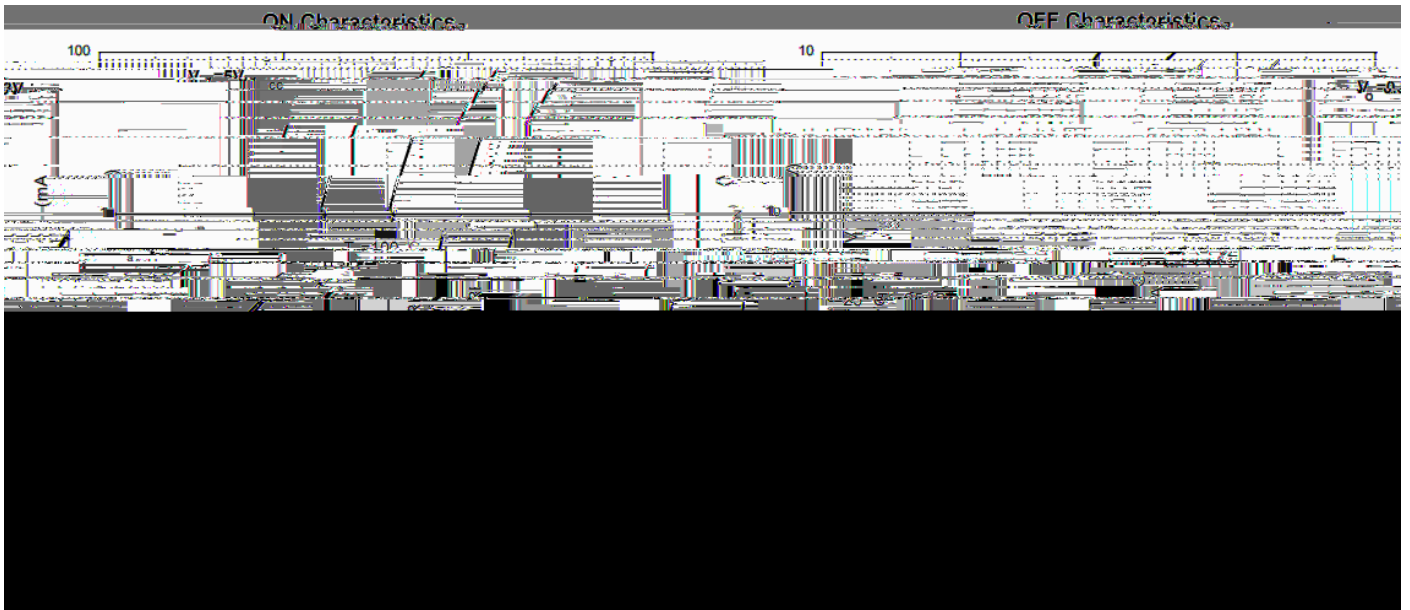
Input voltage	$V_{I(off)}$	V	$V_{CC}=5V, I_o=100\mu A$	0.3	-	-
	$V_{I(on)}$	V	$V_o=0.3V, I_o=20mA$	-	-	3
Output voltage	$V_{O(on)}$	V	$I_o / I_i = 10mA/0.5 mA$	-	-	0.3
Input current	$I_i$	mA	$V_i=5V$	-	-	3.8
Output current	$I_{O(off)}$	$\mu A$	$V_{CC}=50V, V_i=0$	-	-	0.5
DC current gain	$G_i$		$V_o=5V, I_o = 10mA$	33	-	-
Input resistance	$R_1$	k		1.54	2.2	2.86
Resistance ratio	$R_2/R_1$			3.6	4.5	5.5
Transition frequency	$f_T$	MHz	$V_o=10V, I_o=-5mA$	-	250	-

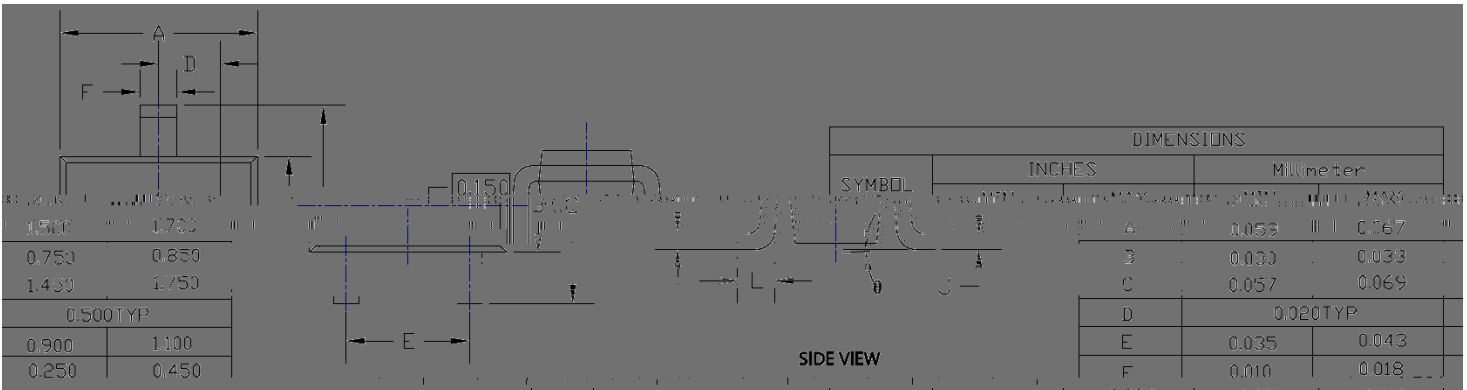
(Example)

DTC123YE	F2	Approximate 0.0027	3000	30000	120000	7" reel



(Typical)





Note:  
1. All dimensions are in millimeters (mm) unless otherwise specified.



