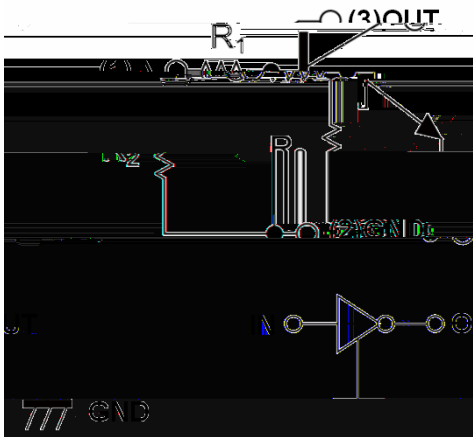




Moisture Sensitivity Level 1
 Surface mount package ideally Suited for Automatic
 Insertion
 Epoxy meets UL-94 V-0 flammability mMTin plated leads, solderable per
 J-STD-002 and JESD22-B102
 64



(Ta=25 Unless otherwise specified)

Supply Voltage	V_{CC}	V	50
Input Voltage	V_{IN}	V	-6 to +40
Output Current	I_O	mA	100
Power Dissipation	P_D	mW	150
Junction Temperature	T_J		150
Storage Temperature	T_{STG}		-55 to +150



(Ta=25 unless otherwise specified)

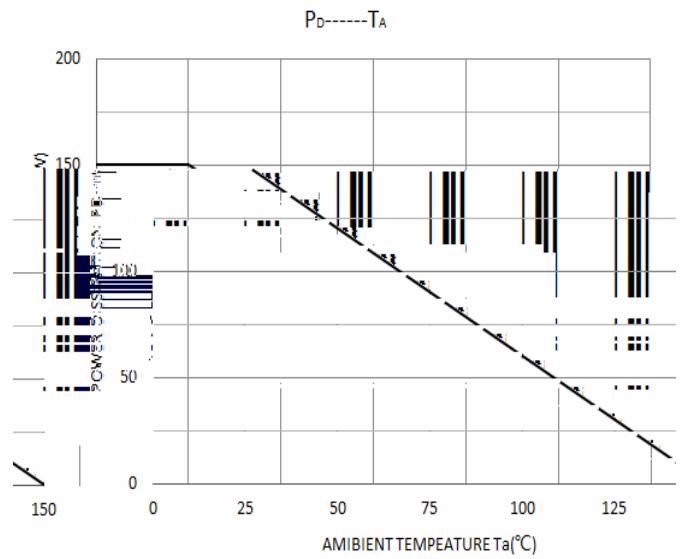
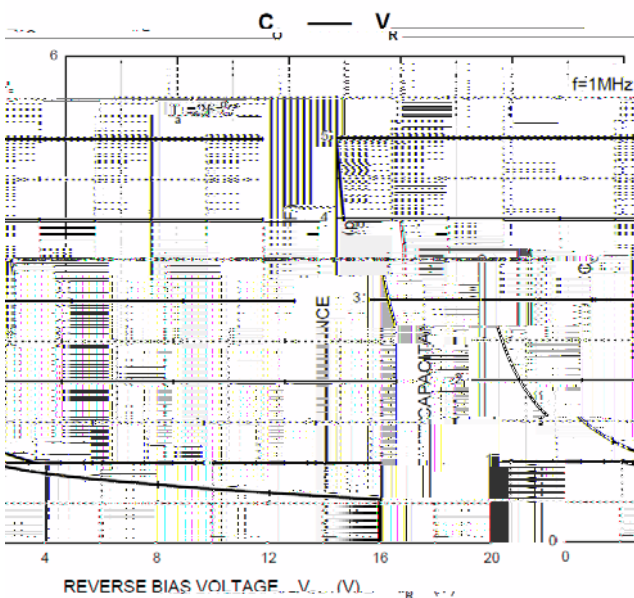
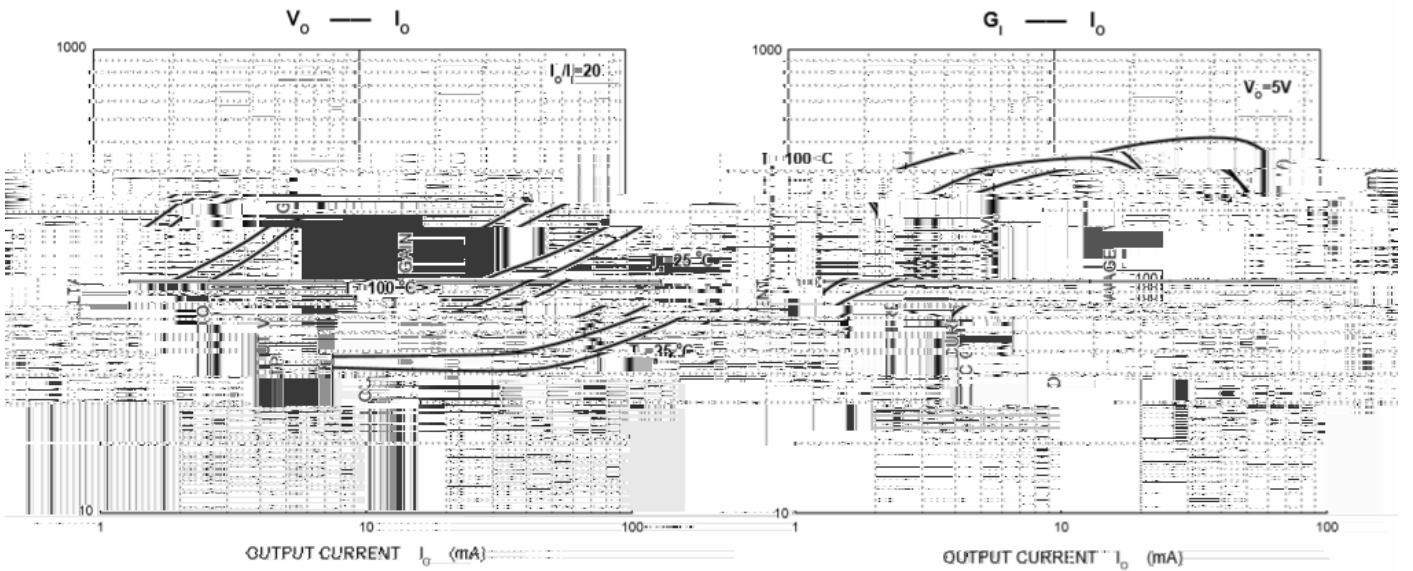
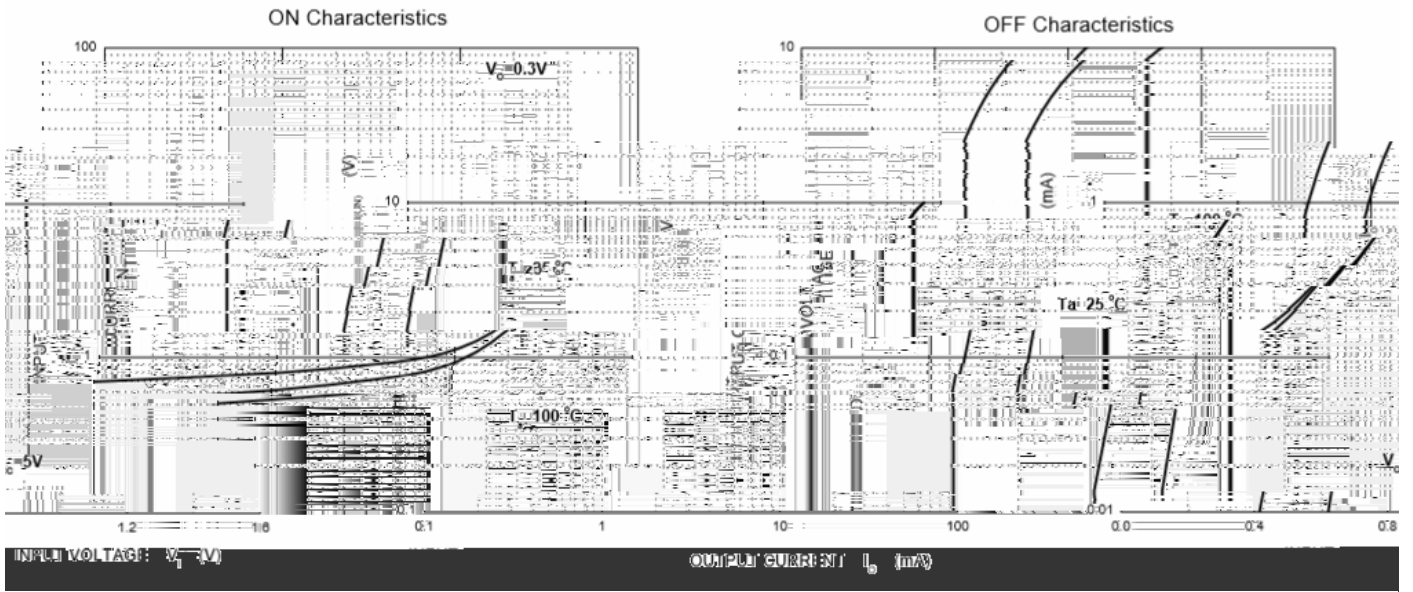
Input voltage	$V_{I(off)}$	V	$V_{CC}=5V, I_o=100\mu A$	0.3		
	$V_{I(on)}$	V	$V_o=0.3V, I_o=1mA$			1.4
Output voltage	$V_{O(on)}$	V	$I_o / I_i = 5mA / 0.25mA$			0.3
Input current	I_i	mA	$V_i=5V$			0.88
Output current	$I_{O(off)}$	μA	$V_{CC}=50V, V_i=0$			0.5
DC current gain	G_i		$V_o=5V, I_o = 5mA$	68		
Input resistance	R_1	k		7	10	13
Resistance ratio	R_2/R_1			3.7	4.7	5.7
Transition frequency	f_T	MHz	$V_o=10V, I_o=-5mA$		250	

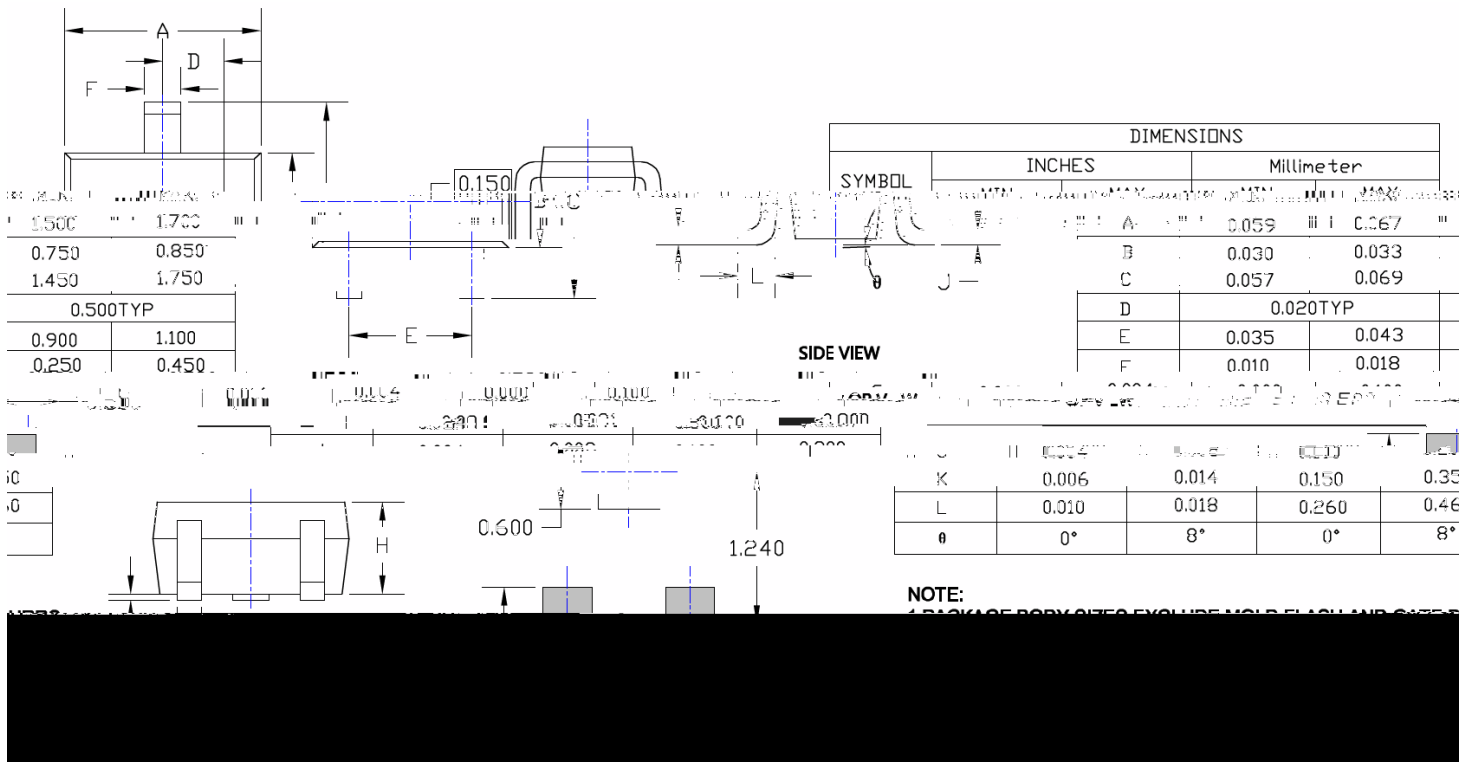
(Example)

DTC114YE	F2	Approximate 0.0027	3000	30000	120000	7" reel



(Typical)





Note:

1. All dimensions are in millimeters (mm) unless otherwise specified.

