

..

:YUhiFYg''

" (SR[\ PPHWV 8/ 9 IODPPDELOLW\ UDWLQJ

" +DORJHQ IUHH DYDLODEOH XSRQ UHTXHVW E

" 0RLVWXUH VHQVLWLYLW\ OHYHO

" /RZ FROOHFWUR & DVH PLWWRQ YROWDJH

AYW\Ub]WU'8Uu'

" DUW\_U[Y 627

0ROGLQJ FRP SRWQ&/ PH9 IODPPDELOLW\ UDW

5R+6 FRPSOLDQW KDORJHQ IUHH

" HYfa]bU'g. 7LQ SODWHG OHDGV VROGHUDEOH S

- 67' DQG -(6' %

" 0DUNLQJ

vAUI]a ia'FUh]b[g 7D - XQOHVV RWKHUZLVH QRWHG

| hYa'   | GmaVc'' | Ib]h' | 7cbX]h]cbg'  | JU'iY' |
|--|---------|-------|--------------|--------|
| 0LQLPXP &ROOHFWRU (PLWWHU 9ROWDJH            |         |       | 9 & 9P\$ % , |        |
| 0LQLPXP &ROOHFWRU %DVH 9ROWDJH &%2           |         | 9     | 9 & , X\$( , |        |
| 0LQLPXP (PLWWHU %DVH 9ROWDJH                 | (%2     |       | 9 ( 9 X\$& , |        |
| &ROOHFWRU &XUUHQW                            | &       | ,     | \$           |        |
| &ROOHFWRU 'LVVLSDWLRQ                        | 3&      | P:    |              |        |
| 7KHUPDO 5HVLVWDQFH )URP -XQFWLRQ 7R \$PELHQW |         |       |              |        |
| 2SHUDWLRQ -XQFWLRQ 7HPSHUDWXUH M             |         | -     | 7            | WR     |
| 6WRUDJH 7HPSHUDWXUH                          | VWJ     | - 7   |              | WR     |



v9`YWhf]WU`7\UfUWhYf]gh]Wg` 7D XQOHVV RWKHUZLVH QRWHG

Table with 7 columns: -hYa', GmaVc'', Ibjh', 7cbX]h]cbg', A]b', HMD', AUI'. Rows contain alphanumeric strings and symbols like '&ROOHFWRU', '9 &9 P\$', 'X\$', 'DLQ', 'D\$ %9 P\$', '0\$ &9 9+ 0+]]', 'S9 (, | 0+p'.

vCfXYf]b[':-bzcf aUh]cb' ([DPS'O H

Table with 7 columns: DF9:9F98'D#B', D57?:-B;'' 7C89', IB-H' K9=:;<Hf[L', A-B=A I A' D57?5; 9fidWgl', -BB9F'6CL' E I 5BH=HMfidWgl', C I H9F'75FHCB' E I 5BH=HMfidWgl', 89@=:J9FM'AC89. Row 1: 6% % 4 ) \$SSUR[L P DWH.

v7 \UfUWhYf]gh]Wg 7 \ S L F D O

Fig. 1 - Static Characteristics

Fig. 2 - DC Current Gain Characteristics

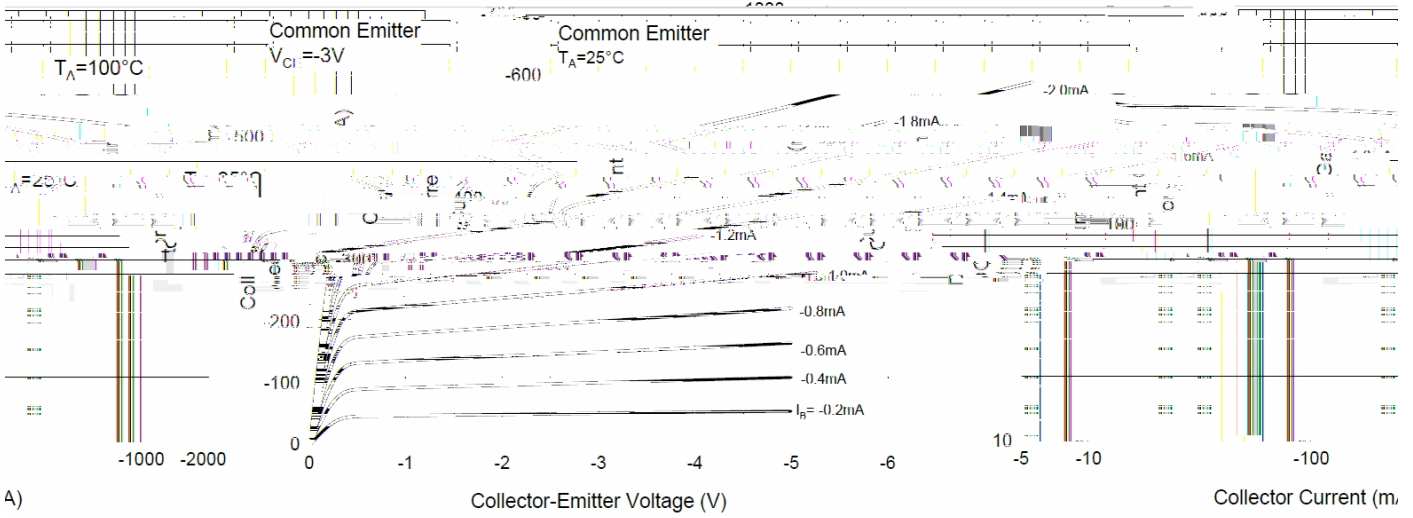


Fig. 3 - Collector-Emitter Saturation Voltage Characteristics

Fig. 4 - Base-Emitter Saturation Voltage Characteristics

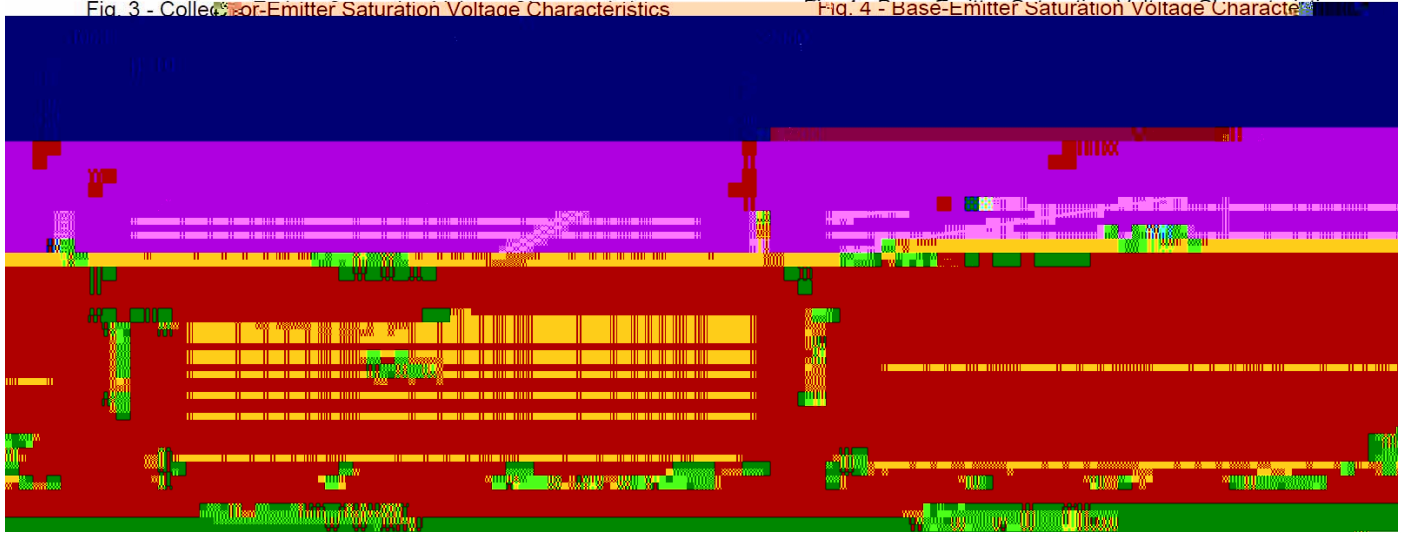
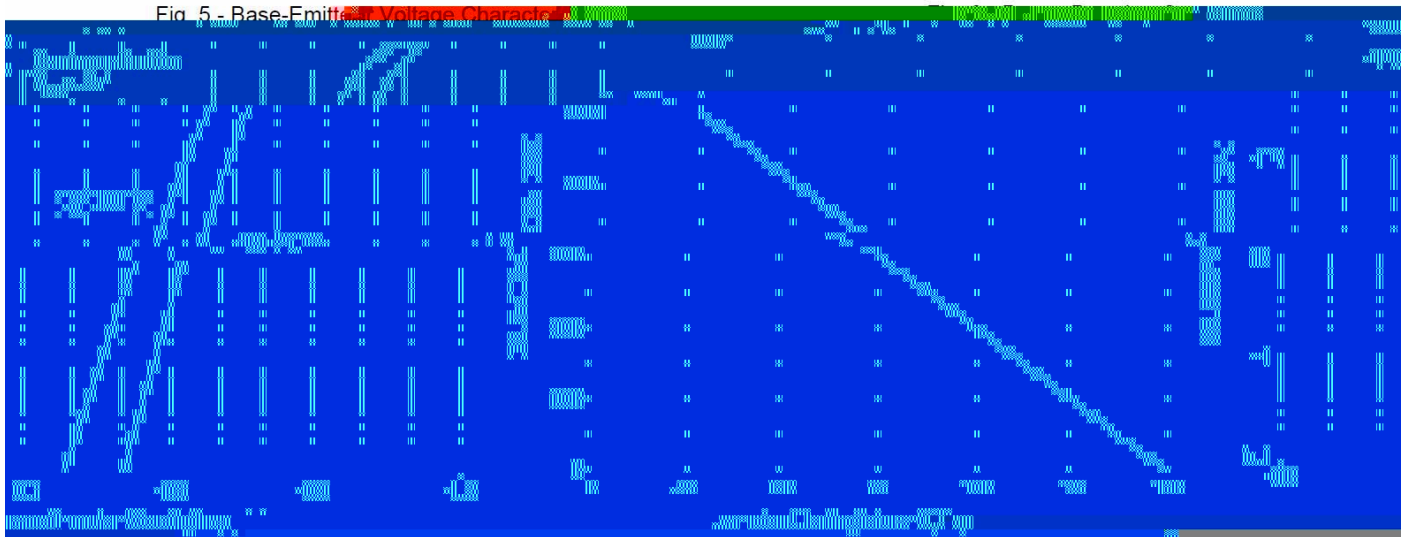
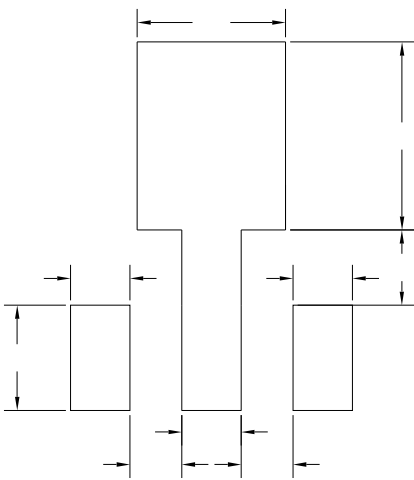


Fig. 5 - Base-Emitter Voltage Characteristics



v627 3DFNDJH 2XWOLQH 'LPHQVLRQV

v627 6XJJHVWHG 3DG /D\RXW



81,7 00



8]gW'U]aYf'

7KH LQIRUPDWLRQ SGRV#DQMG LG IWR KLW#DQJH#K#R#K#BQJMLH (OHFWURQLF 7HFKQRO  
ULJKW WR PDNH FKDLQJH VRZLWKR XWS KRLS IURDG XIERQ/ RGLWSOD\HG KHUHLQ WURGLFSLWRJY  
RU RWKHUZLVH

7KH SURGXFW OLVWHG KHUHLQ LV GHVH#H#W#G#R#R#FE#HTXVLS#B#HZLW#R#R#LGHLYQLF#H#V#W#D#Q#G  
HTXLSPHQW RU GHYLFHV ZKLFK UHT#LW#K#K#E#D#O#O#H#Q#F#H#O#G#R#G#L#R#H#O#L#D#L#B#K#D#D#Q#F#K#U#K#X#P#D  
PHGLFDO LQVWUXPH#R#W#H#T#W#L#S#D#Q#H#S#R#U#D#H#H#R#V#S#D#F#H#D#D#E#K#L#D#D#F#W#R#L#O#F#R#Q#D#L#G#R#B#O#H#U#V#I  
GHYLFHV <DQJMLH RU DQ\RQH RQ LWV#O#E#M#K#D#R#U#O#L#D#E#X#L#D#H#L#W#Q#R#R#W#H#D#G#R#Q#D#E#B#J#K#V#H#H#V#  
RI VDOH

7KLV SXEOLFDWLRQ#S#V#O#S#F#H#U#W#D#G#D#V#L#Q#U#R#Q#P#D#X#S#L#S#Q#L#S#G#H#Y#R#R#X#D#G#G#L#W#L#R#Q#D#O#L#Q#W#R#H#U#P#D#W#L#R#  
KWWS ZZZ \DQJMLH FRP RU FRQ#D#D#G#W#R#R#L#U#F#H#Q#H#R#U#H#X#U#W#K#D#H#Q#J#D#L#M#H#V#W#D#Q#F#H