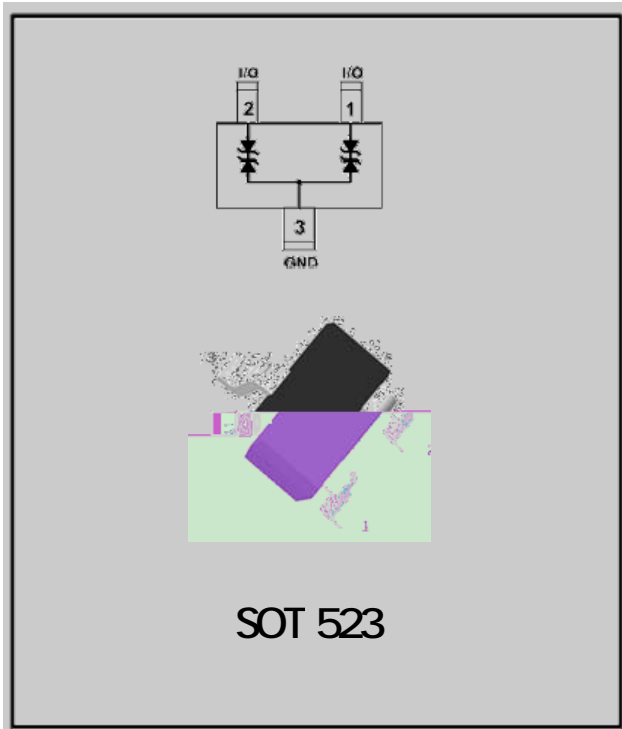


2-Line, Bi-directional, Transient Voltage Suppressor

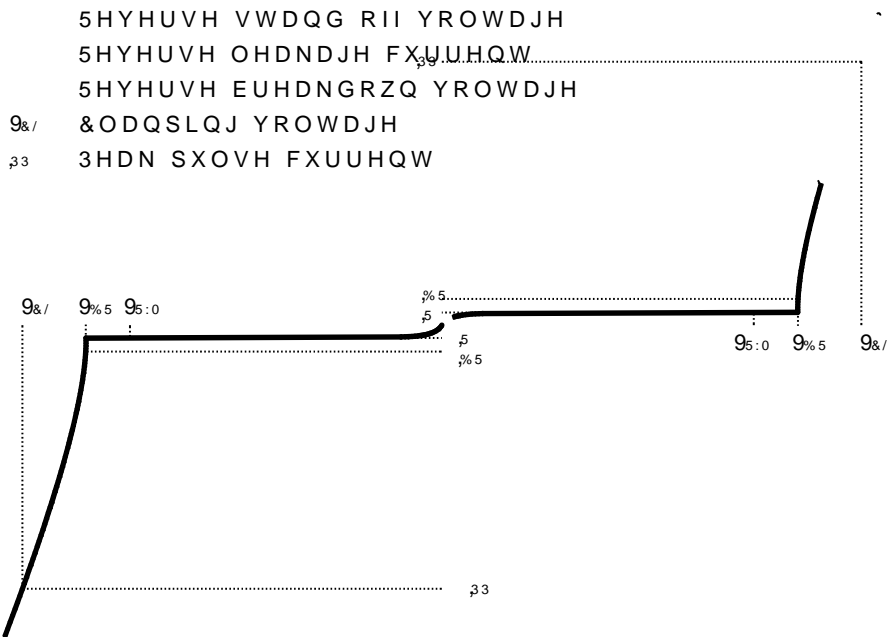
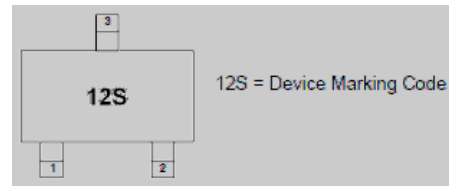


Features

±

Applications

Mechanical Data





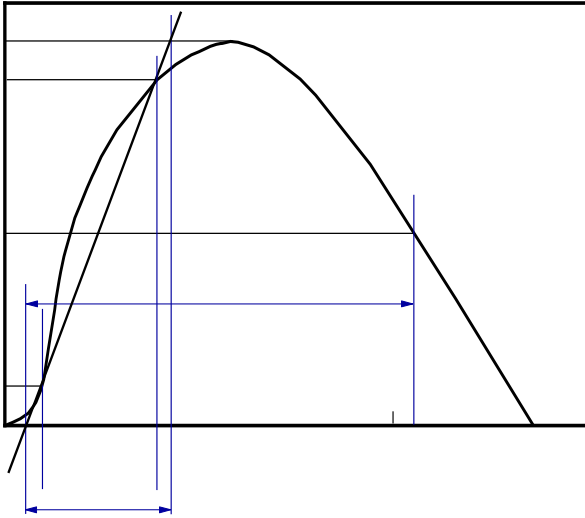
ESDLC0502S5B

Maximum Ratings

PARAMETER	SYMBOL	LIMITS
-----------	--------	--------

Characteristics (Typical)

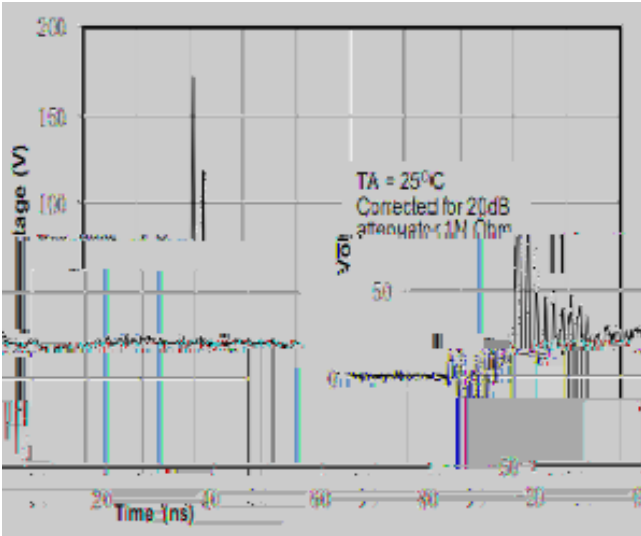
Fig.1 8/20 μ s waveform per IEC61000-4-5



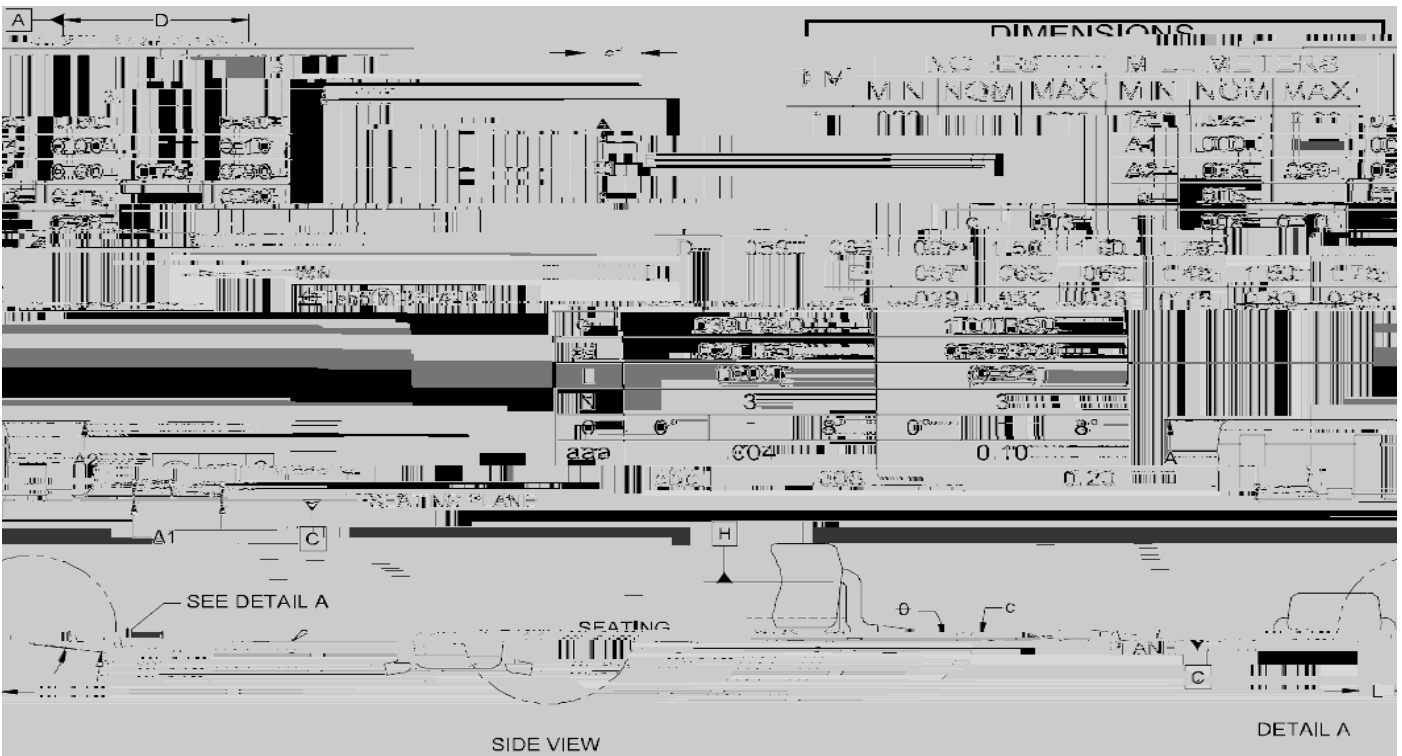


ESDLC0502S5B

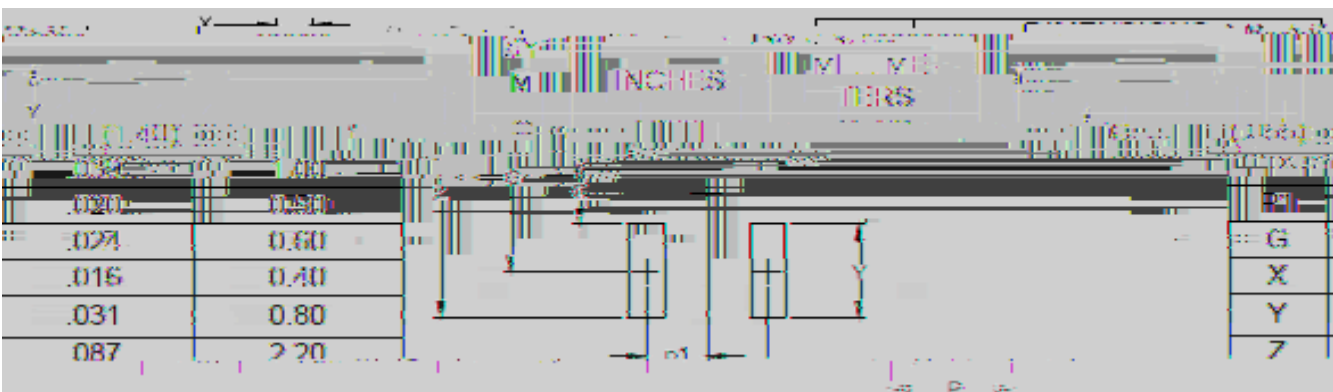
Fig.7 ESD clamping - I/O to GND
(+8kV contact discharge per IEC61000-4-2)



Outline Dimensions



Soldering Footprint





Disclaimer
