



# ESD12VLZA

## Maximum Ratings

PARAMETER	SYMBOL	LIMITS	UNIT
3 HDN SXOVH <sub>3</sub> SRZHU W	3 <sub>SN</sub>		:
3 HDN SXOVH <sub>5</sub> FXUUHQW W	3 <sub>3</sub>		
(6' DFFRUGLQJ WR ,(& DLU GLVFKDUJH	9 <sub>(6'</sub>	"	N 9
(6' DFFRUGLQJ WR ,(& FRQWDFW GLVFKDUJH		"	
-XQFWLRQ WHPSHUDWXUH	.	7	R&
2SHUDWLQJ WHPSHUDWXUH	2 <sub>3</sub>	7 a	R&
6WRUDJH WHPSHUDWXUH	6 <sub>7</sub> *	7 a	R&

## Electrical Characteristics

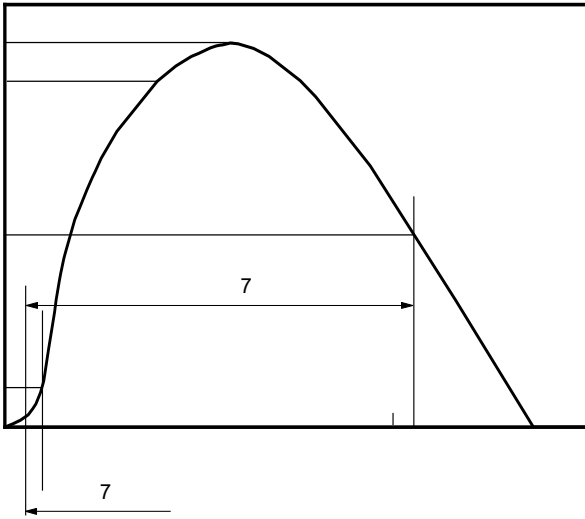
PARAMETER	Symbol	UNIT	Conditions	Min	Typ	Max
5HYHUVH PD[LXP ZRUNLQJ YROWD <sub>5</sub> JH	5	Q\$	9			
5HYHUVH OHDNDJH FXUUHQW	5	Q\$	9			
5HYHUVH EUHDNGRZQ YROWD <sub>5</sub> JH	9 <sub>%5</sub>		%5 P\$ 9			
)RUZDUG YROWD <sub>5</sub> JH	)	9	) P\$ 9			
&ODPSLQJ <sup>1</sup> YROWD <sub>5</sub> JH	9 <sub>&amp;/</sub>	9	3 <sub>3</sub> \$ <sub>s</sub> W QV			
'\QDPLF UHV <sub>1</sub> LVWDQFH	5 <sub>&lt;1</sub>					
&ODPSLQJ <sup>2</sup> YROWD <sub>5</sub> JH	9 <sub>&amp;/</sub>		(6' N9 9			9
&ODPSLQJ <sup>3</sup> YROWD <sub>5</sub> JH	&/	9	3 <sub>3</sub> \$ <sub>s</sub> W V			9
		9	3 <sub>3</sub> \$ <sub>s</sub> W V			
-XQFWLRQ FDSDFLWDQFH	.	S)	9 9 l 0+]			
		S)	9 9 l 0+]			

1RWHV

7/3 SDUDPHWHUW = QV " 7 0+ A`0A " HBa RWH` i"9 ó

v & KDUDFWHØLSLVFDFOV

)LJ V ZDYFSHRW ,(&







# ESD12VLZA

## Disclaimer

7KH LQIRUPDWLRQ SGRFWRUHQW LQ IRXUHQWV LQ JKHQRK BQJMLH (OHFWURQLF 7HFKQRO  
ULJKW WR PDNH FKDLFHVRZLWKR XWSKRLSULFRG\KFRV\ RGLWSOD\HG KHUHLQ WURGLFSLWRQ  
RU RWKHUZLVH

7KH SURGXFW OLVWHG KHUHLQ LV GHVWLJHG WR RFEHTXLVISEHZLWKR UR LGHLYLDFWVW DQG  
HTXLSPHQW RU GHYLFHV ZKLFK UHTXLW KHKE DQO DQYFHOGRG URHHOZLVH DQVGDQFHU DXP  
PHGLFDO LQVWUXPHQW VHTWLSDFHVR UHWURV SODFHOD FDEKULDFWRLQ FFRQVQGRBODHUU V  
GHYLFHV <DQJMLH RU DQ\ RQH RQ LWV OEWK DQJMLH VEXLW QRR W HOSRQV EBJHV HUV  
RI VDOH

7KLV SXEOLFDWLRQ ISVXSHUW DQDVLQURQPDVLSRQLSGHYRUR DVGGLWLRQDO LQWRUPDWLR  
KWV [VZ](#) [\DQJMLHRFR](#) FRQVXOW IRXU QH DUHW <DQJMLH VEXLW QVFOHV RILFH IRU IXUW